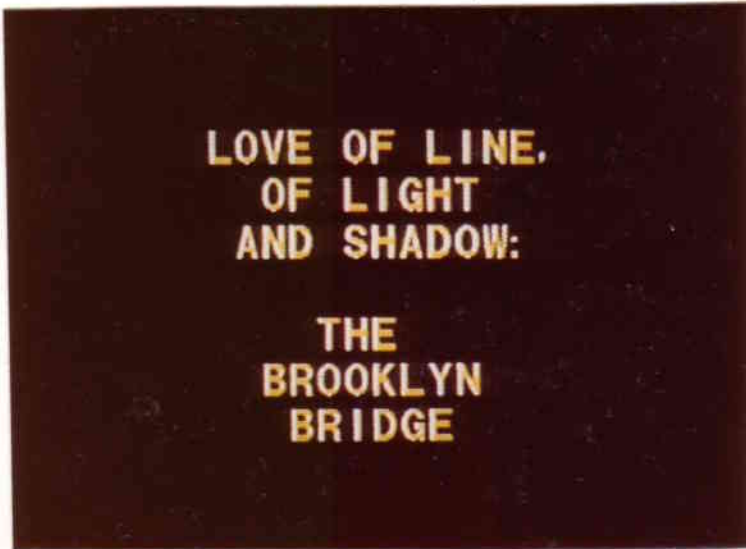


FOR F. GERARD ERRANTE

LOVE OF LINE, OF LIGHT AND SHADOW: THE BROOKLYN BRIDGE

FOR CLARINET, COLOR VIDEO, AND ELECTRONIC SOUND. REYNOLD WEIDENAAR (1982)



1 ↓

Cl.
in B \flat

SEMI-PITCHED BRIDGE SOUND

TAPE
in C

0 ppp -20dB

1 mf -15

2 f -10

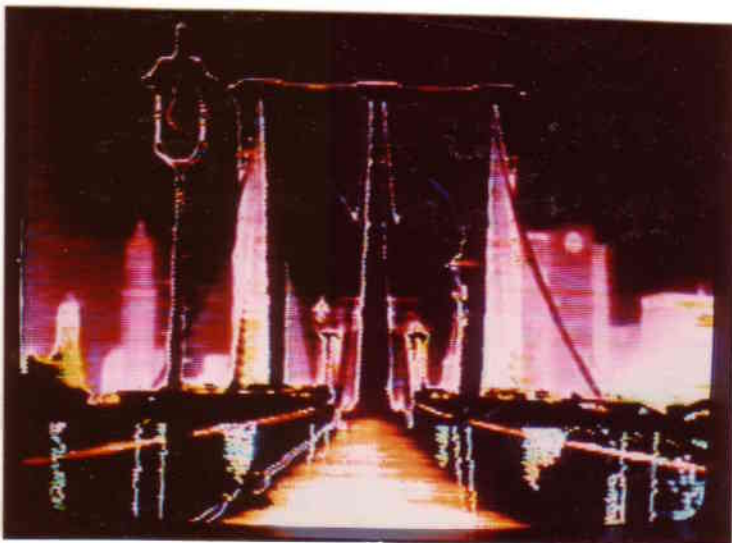
3 mp -15

4 mp -20

5 p -25

6 p -25

7



2 ↘

2

Cl. *BREATHY TONE*

pp *mp*

T. 7 8 9 10 11 12 13 14

ppp *ppp* *f*

Cl. *trem.*

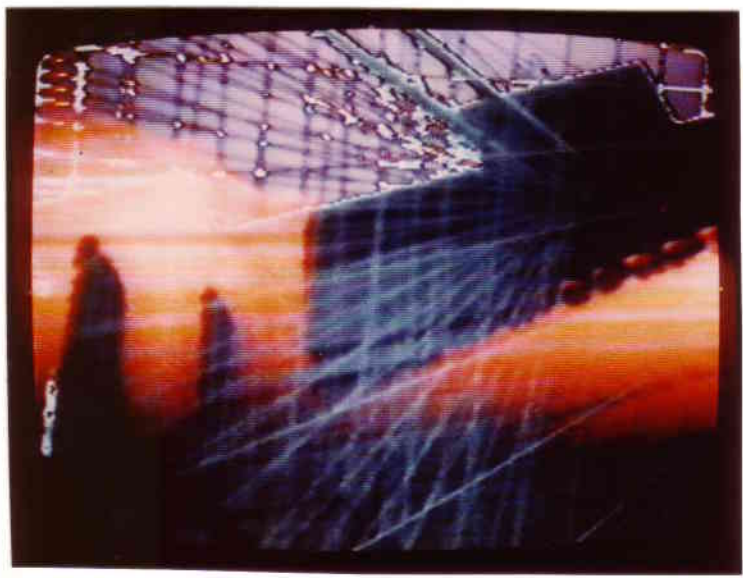
f *mp*

T. 14 15 16 17 18 19 20 21

ppp

L CH REVERS
R CH DRY

0:18.9



3

Cl. *ppp* *f* *ff* *mp*

T. 21 22 23 24 25 26 27 29

mp *ppp*

REVERS

③

C.I.

T.

28 29 30 31 32 33 34 35

C.I.

T.

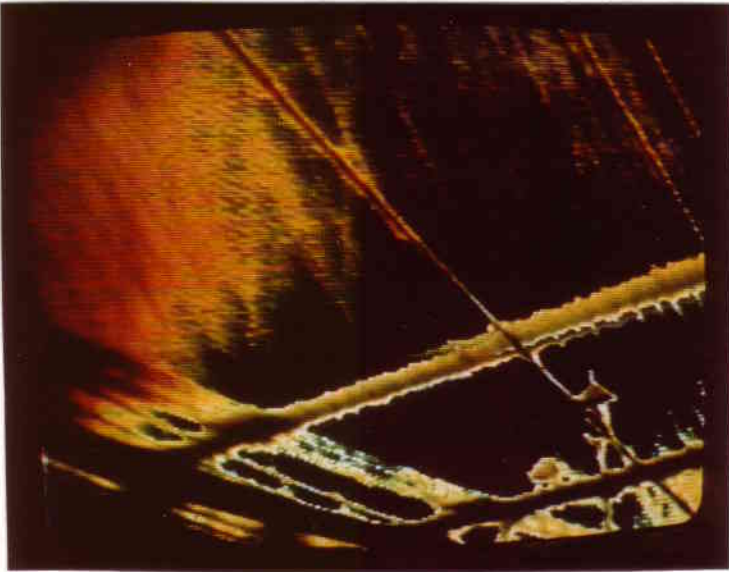
35 36 37 38 39 40 41 42

with 6.5ms Comb (15.4 Hz)

pp mp p

BREATHY TONE

0:37.4



C.I.

T.

42 43 44 45 46 47 48 49

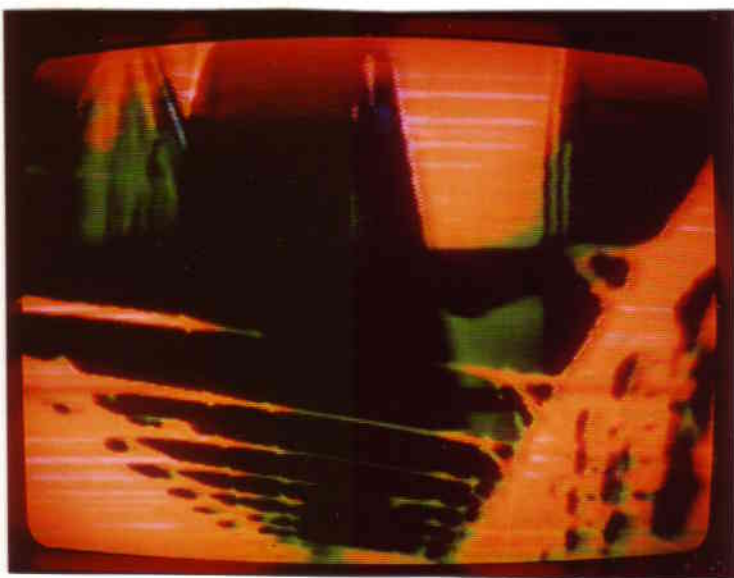
pp p mp

DOUBLE STOP

C1.

T.

49 50 51 52 53 54 55 56



5 ↓

C1.

T.

56 57 58 59 60 1:01 02 03

f *tr. accel.* *decel.* *ff*

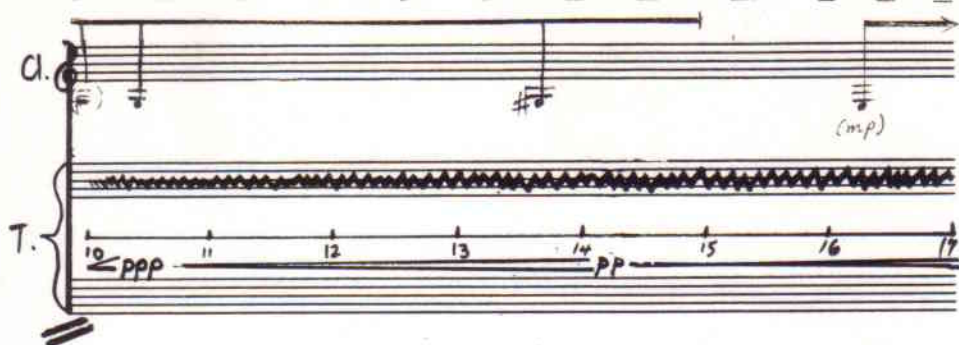
C1.

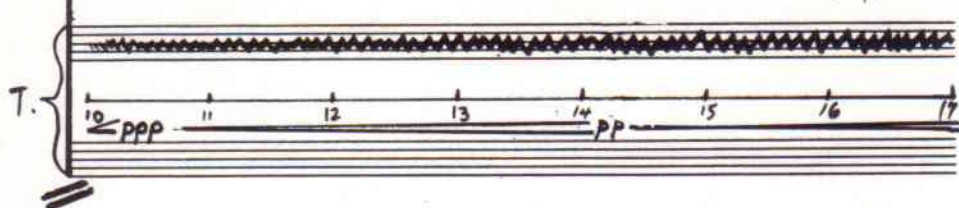
T.

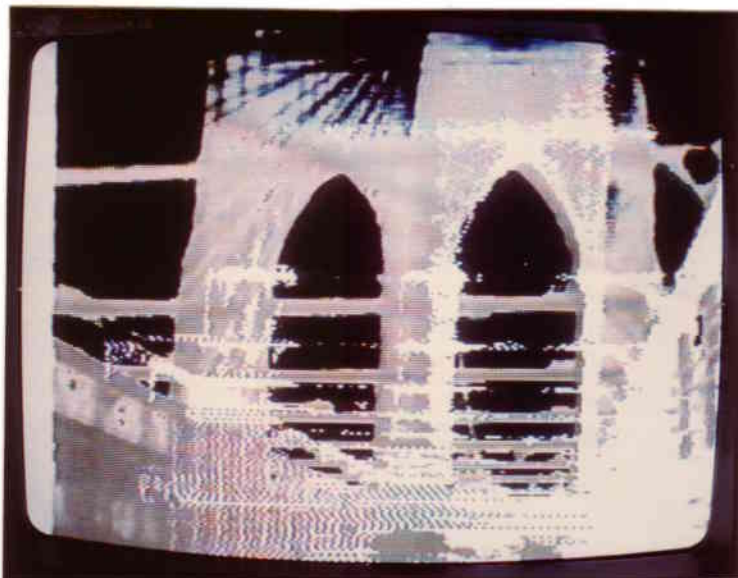
3 4 5 6 7 3 1:10

f *mf* *mp* *BREATHY TONE* *ORIGINAL BRIDGE* *PPPPP*

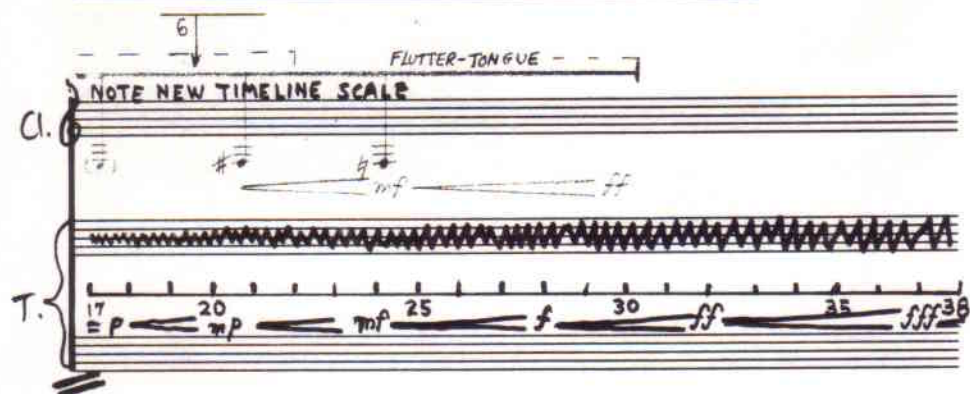
5

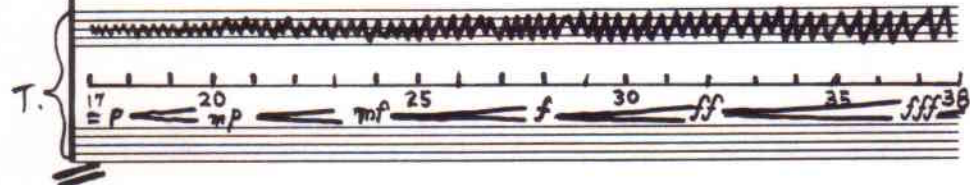
C. 

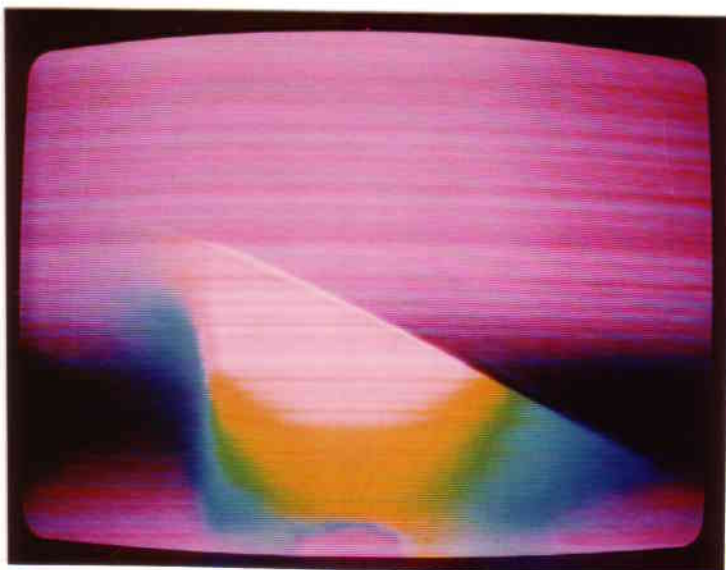
T. 



NOTE NEW TIMELINE SCALE

C. 

T. 



7

6

7

CI. YET ANOTHER TIMELINE SCALE

T. PROC'D. BRIDGE ECHO

38 39 1:40 41 45 50 52

65 ms 75 ms 90 ms 100ms 110ms 120ms

1:43.57

pp ff mp

f p

T.T. (w)



8

CI. YE OLDE ORIGINAL TIMELINE SCALE

T. 52

8 COMB HAZY PITCH BRIDGE - L CH. DIR., R CH. DELAY + RVB.

REPEAT ETC. REPEAT 59

NATURAL BRIDGE - VARIOUS PRESENCES EDITED, FIBONACCI DURATIONS

1:53.57

mf

ETC.

59 60 2:01 15 22 05 06

C.I.

MATCH TAPE PULSE

T.

C.I.

SUSTONE (TONGUE OVER LOWER TEETH)

ECHO

T.

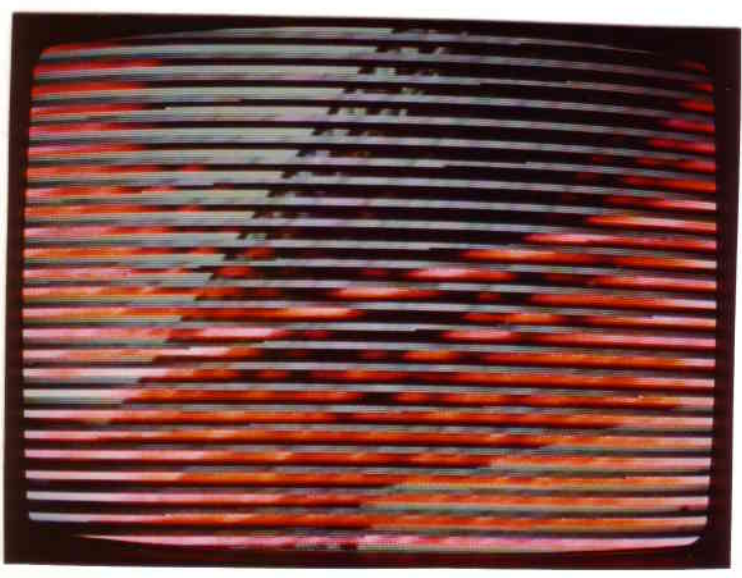
33 34 35 36 37 ECHO 38 39 40

C.I.

mp

T.

40 41 42 43 44 45 46 47



Cl. *R.O.* *#* *#* *p* *10↓*

T. 47 48 49 50 51 52 53 *be* 54

Cl. *ff* *mf* *mp* *SUBTONE*

T. 55 56 57 58 59 60 3:01

2:54.07

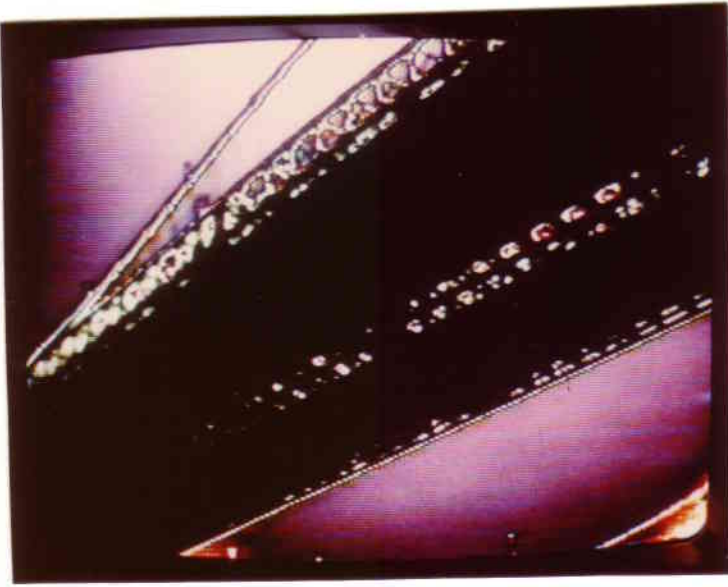
Cl. *CHRO GL*

T. 01 *be* 02 *be* *COMB SWEEP* 04 05 06 07 08

Cl. *SUBTONE*

T. *B* 09 *mf* 10 11 12 13 *FLANGE COMB* 3:01.75

TRUMPS. 3:13.94



GRIDLOCK RUBATO: PRECISE
SYNC WITH TAPE AT BARLINES

C.I.

T.A.P.E.

3:15.46

mp

1 2 3 4 5 6 7

Handwritten musical notation for Clarinet I (C.I.) and Tape (T.A.P.E.). The C.I. staff shows a melodic line with dynamics *f*, *mf*, and *ff*. The Tape staff shows a rhythmic pattern with notes numbered 1 through 7. A time signature of 3:15.46 is indicated.

A.

T.

ff

tr

mf

f

8 9 10 11 12 13 14

Handwritten musical notation for Clarinet A (A.) and Tape (T.). The A. staff features a melodic line with dynamics *ff*, *mf*, and *f*, and includes a trill marked 'tr'. The Tape staff shows notes numbered 8 through 14.

C.I.

T.

ff

mf

f

mp

f

tr

14 15 16 17 18 19 20 21

Handwritten musical notation for Clarinet I (C.I.) and Tape (T.). The C.I. staff shows a melodic line with dynamics *ff*, *mf*, *f*, *mp*, and *f*, and includes a trill marked 'tr'. The Tape staff shows notes numbered 14 through 21.